



Introduction to TrayCalendar

TrayCalendar is Copyright © 1996, 1997, **EBus**, All Rights Reserved

Synopsis

TrayCalendar allows a user to add the date to the system tray as text or an icon.

Platforms

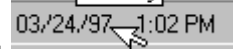
TrayCalendar was written for Windows NT 4.0 and Windows 95.

Major features

- o Displays convenient date text or icon next to the task bar clock.
- o Displays convenient tooltip over **TrayCalendar** task bar icon.
- o Many user-customizable date features
- o Delayed startup to place **TrayCalendar**/icons next to time value in system tray
- o Automatic refresh of date to keep **TrayCalendar** next to the time in the system tray.



Monday



Registration

TrayCalendar is Shareware. You may use it for a trial period of **30** days. After **30** days, you must either register the product or discontinue usage of it. The registration fee is **US \$15**. For detailed information, please see the [Registration](#) page.



Installation/Uninstallation/Startup Folder

Installation

TrayCalendar is distributed in 2 ways:

- A. As a self-installing executable (.exe)
 - B. As a zip file containing the base files for **TrayCalendar**
- o For the self-installing executable, simply double-click on the .exe and follow the on-line instructions.
 - o For the zip file, unzip the file and place all the files in a new folder, perhaps called **TrayCalendar**. To run the program, execute or double-click **TrayCalendar.exe**.
 - o For both installations, to schedule **TrayCalendar** to always run at startup of Windows NT or 95, create a shortcut in your "Startup" folder.

Detailed shortcut information

Using the Explorer, right click and drag **TrayCalendar.exe** and drop it in your **Startup** folder, choose **Create Shortcut Here** from the popup menu. For detailed help, please see the manual for NT or 95, refer to **Shortcuts**.

Uninstallation

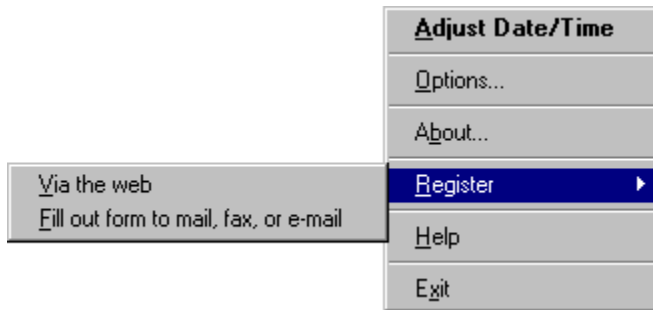
If you installed using the self-installing .exe file

Go to Control Panel -> Add/Remove programs and select **TrayCalendar** from the listing - **TrayCalendar** will automatically uninstall.

If you manually unzipped the **TrayCalendar** files

Delete the folder you created during the install, perhaps called **TrayCalendar**. All the files and settings used by **TrayCalendar** will be deleted.

Popup menu commands



The Popup menu is accessed by clicking with mouse button two on the **TrayCalendar** task bar icon.

The Popup menu offers the following commands:

Aadjust Date/Time

Options

About

Register via the web

Register via mail, fax, or e-mail

Help

Exit

Adjust system date/time.

Opens options for **TrayCalendar**

Display about screen for **TrayCalendar**

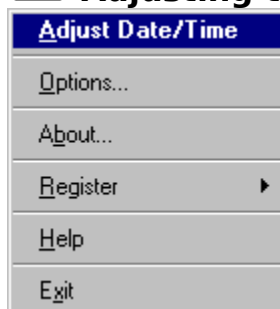
Register **TrayCalendar** via the web

Register **TrayCalendar** via the mail, fax, or e-mail

Display **TrayCalendar** Help

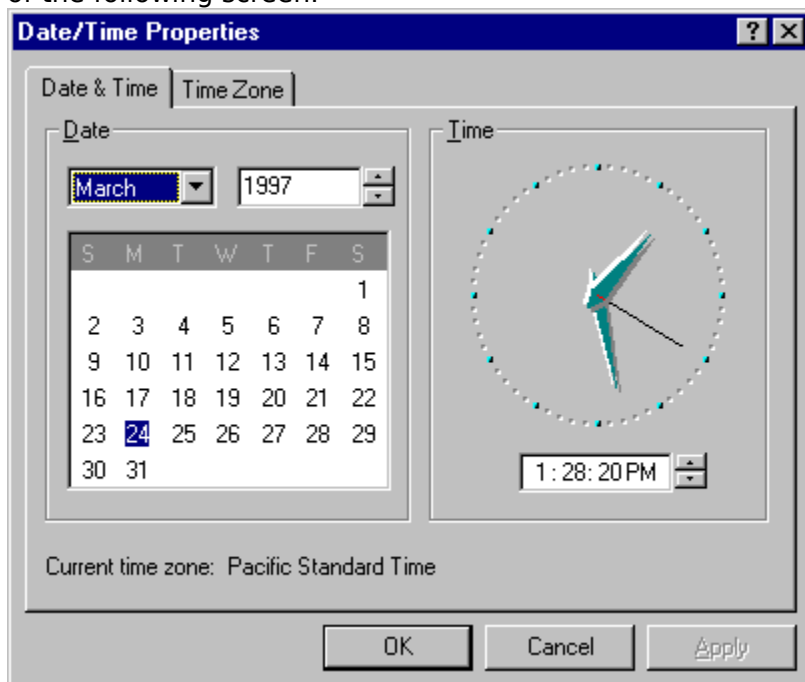
Exits **TrayCalendar**

Adjusting the system date/time

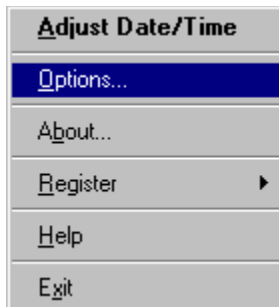


Use this menu item to open the system date/time settings for Windows NT or 95.

Please consult either the Windows NT or 95 on-line help or manuals for information on usage of the following screen:

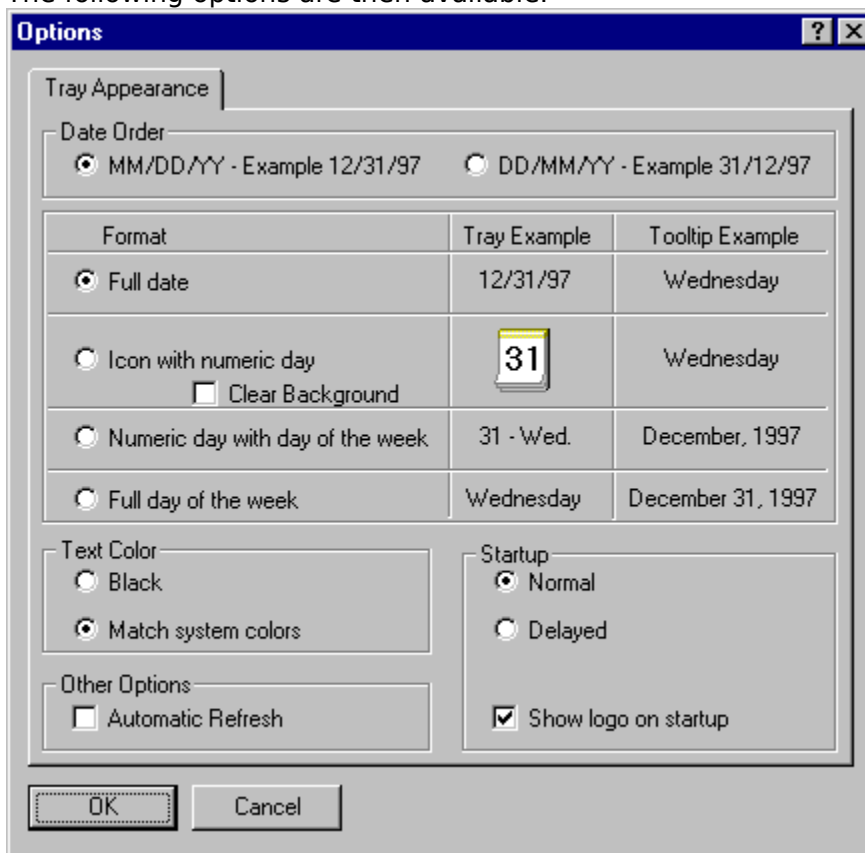


TrayCalendar Options



Use this menu item to open the options screen for **TrayCalendar**. Options can also be opened by double-clicking on the **TrayCalendar** icon.

The following options are then available:



OK Button

Cancel Button

? Symbol

Date Order MM/DD/YY

Press **OK** to exit the screen

Press **Cancel** to exit the screen and abandon any changes.

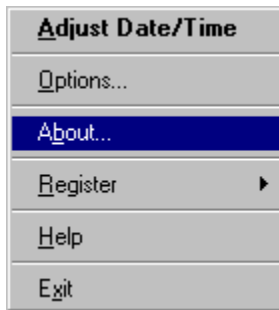
Use the ? or mouse button two to get context-sensitive help - [Please explain](#)

Select this to display the full date as MM/DD/YY when full date is selected from the format section of the Options screen

Date Order DD/MM/YY	Select this to display the full date as DD/MM/YY when full date is selected from the format section of the Options screen
Full Date	Select this to show the date as full date text, for example 12/31/97
Icon with Numeric day	Select this to show the day only as an icon
Clear Background	Select this to display the iconic day with a clear background
Numeric day with day of the week	Select this for both the numeric day and the short version of the day of the week, for example 31-Wed.
Full day of the week	Select this to show the day as a full text day, for example Wednesday.
Text Color - Black	Select this to display the TrayCalendar text always as Black.
Text Color - Match system colors	Select this to allow TrayCalendar to match the text to the system colors set in the system Control Panel.
Startup - Normal	Select this to have TrayCalendar start immediately.
Startup - delayed	Select this to delay the startup of TrayCalendar to allow other icons to place themselves in the system tray. This will allow TrayCalendar to place itself next to the time value located in the system tray.
Show logo on startup	Select this to show the About screen on startup.
Automatic Refresh	Check this box if you want TrayCalendar to automatically refresh itself every 10 minutes. This will keep the TrayCalendar icon(s) next to the time in the system tray.

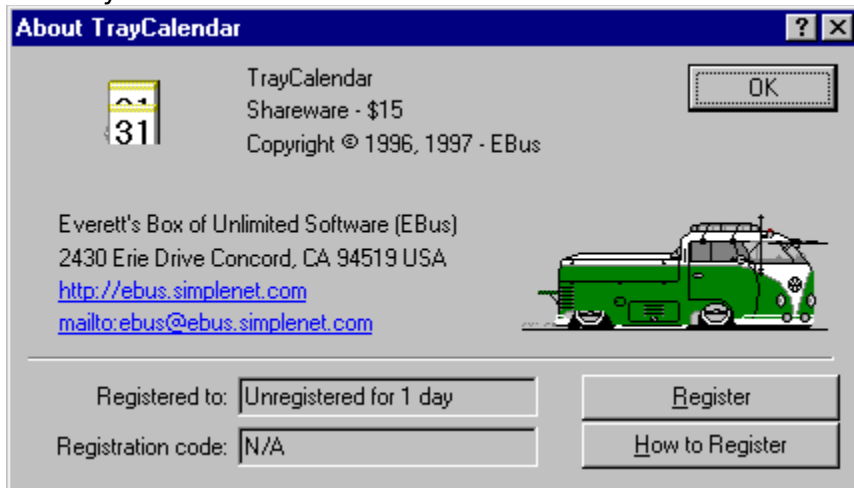


About TrayCalendar



This Popup Menu item displays the **About** screen for **TrayCalendar**.

You may then use this screen:



OK Button

Press **OK** to exit the screen

? Symbol

Use the **?** or mouse button two to get context-sensitive help - Please explain

Web Link

Use the textual web link (**http://ebus.simplenet.com**) to go to the **EBus** web page if you have a web browser installed.

E-Mail Link

Use the textual mail link (**mailto:ebus@ebus.simplenet.com**) to send mail to **EBus** about this or any product if you have a default Mail program registered on your system.

Registered To
Registration Code

Displays who **TrayCalendar** is registered to.
Displays the **TrayCalendar** registration code

Register Button

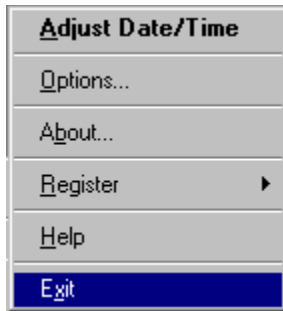
Press to open the Registration screen

How To Register
Button

Press for help on how to register **TrayCalendar**



Exiting TrayCalendar



Press **Exit** on the Popup Menu to exit **TrayCalendar**

Quick Introduction to TrayCalendar Usage

- o Click with mouse button 2 to access the Popup Menu
 - o Use Adjust Date/Time to the system date/time.
 - o Use Options to change the options for **TrayCalendar**.
 - o Use About to view the About screen for **TrayCalendar** and/or register TrayCalendar.
 - o Use Register via the web to Register **TrayCalendar** via the web.
 - o Use Register via mail, fax, or e-mail to Register **TrayCalendar** via the mail, fax, or e-mail/
 - o Use Help to access the **TrayCalendar** Help.
 - o Use Exit to exit **TrayCalendar**.

- o Double-click the **TrayCalendar** icon to access the Adjust Date/Time.

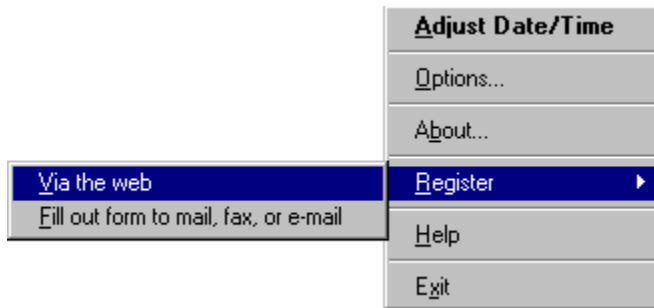


Known Issues

o None

o If you come across any problems with **TrayCalendar**, please do not hesitate to contact the author of **TrayCalendar**. (see [Contacting the Author](#))

Registering TrayCalendar via the web



This menu item will open your web browser and browse to site <http://ebus.simplenet.com/registration.htm> for **TrayCalendar** on-line registration.

Thank you for your support!

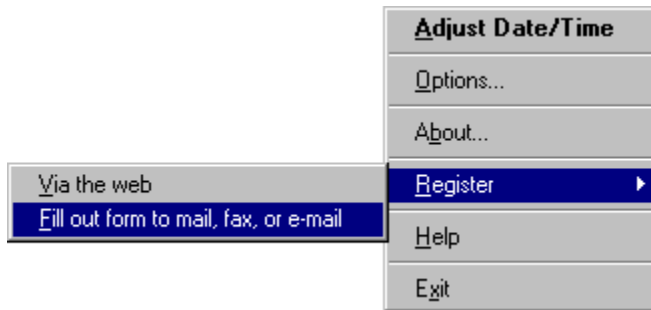


New features in this version of TrayCalendar

- o Registration
- o Context-sensitive help (see [On-line Help](#))



Registering TrayCalendar via mail, fax, or e-mail



This menu item will start the **Register** application to initiate registration for **TrayCalendar** via mail, fax, or e-mail.

Registrations will be sent to Kagi, a registration service provider noted in the Register program. Thank you for your support!



Registration of TrayCalendar

TrayCalendar is a Shareware program and is provided at no charge to the user for evaluation.

If you find this program useful and find that you are using **TrayCalendar** after the **30** day trial

period, you must pay a registration fee of **\$15** (US) to **EBus** or discontinue your usage of **TrayCalendar**.

Why should I register?

- o Registration of **TrayCalendar** will entitled you to all versions of **TrayCalendar**, now and in the future
- o You will be supporting the Shareware concept and keeping Shareware prices low for everyone.
- o Although all feedback and/or comments are much appreciated, (see [Contacting the Author](#)) your input on what new features should be included in new releases of **TrayCalendar** may carry greater weight.
- o Appreciation from the author of **TrayCalendar**.

TrayCalendar may be registered in many ways:

Using the **EBus** on-line registration:

Go to <http://ebus.simplenet.com/registration.htm> for **TrayCalendar** on-line registration or select [Register via the web](#) from the [Popup Menu](#)

Using the **EBus** registration program:

Select [Register by mail, fax, or e-mail](#) from the [Popup Menu](#)

By sending a check or money order (US funds only) to:

EBus

2430 Erie Drive
Concord, CA 94519
USA

How to Register TrayCalendar once you have your Registration Code

Once you have received a registration code from **EBus**, open the [About](#) screen and press **Register**.

You will then be presented with the following screen:

The screenshot shows a dialog box titled "Register TrayCalendar". It features a small icon of the TrayCalendar logo (a box with "31" and "21") on the left. To the right of the icon, there are two text input fields: "Name:" and "Registration code:". Below the input fields are three buttons: "OK", "Cancel", and "How to Register".

OK Button

Press **OK** to validate your Registration Name and Code and

Cancel Button

save and exit the screen.

Press **Cancel** to abandon registration and return to the About screen

? Symbol

Use the ? or mouse button two to get context-sensitive help - Please explain

Name

Enter the name you used to register **TrayCalendar**.

Note: You must use the same name for the registration code to work!

Registration Code

Enter the Registration code provided to you by EBus.

How To Register

Press for this help screen.

Button



History of TrayCalendar

v1.1 - March 25, 1997

- o Registration
- o Context-sensitive help (see [On-line Help](#))

v1.0 - September 18, 1996

- o First Release



Contacting the author of TrayCalendar

The author of **TrayCalendar** can be contacted in a variety of ways:

By Mail

EBus

2430 Erie Drive
Concord, CA 94519
USA

At our web page

<http://ebus.simplenet.com>

By E-Mail

ebus@ebus.simplenet.com

The **About** screen of the **TrayCalendar** contains hotlinks to the Web Page and E-Mail.



License/Disclaimer/Copyright/Restrictions

TrayCalendar is Copyright © 1996, 1997, **EBus**, All Rights Reserved

DISCLAIMER OF WARRANTY

THIS SOFTWARE IS PROVIDED "AS IS" AND WITHOUT WARRANTIES AS TO PERFORMANCE OF MERCHANTABILITY OR ANY OTHER WARRANTIES WHETHER EXPRESSED OR IMPLIED. BECAUSE OF THE VARIOUS HARDWARE AND SOFTWARE ENVIRONMENTS INTO WHICH THIS PROGRAM MAY BE PUT, NO WARRANTY OF FITNESS FOR A PARTICULAR PURPOSE IS OFFERED. THE USER MUST ASSUME THE ENTIRE RISK OF USING THE PROGRAM. IN NO EVENT WILL THE AUTHOR BE LIABLE TO YOU FOR ANY DAMAGES, INCLUDING INCIDENTAL OR CONSEQUENTIAL DAMAGES, ARISING OUT OF THE USE OF THE PROGRAM, EVEN IF ADVISED OF THE POSSIBILITY OF SUCH DAMAGES.

YOU ACKNOWLEDGE THAT YOU HAVE READ THIS LICENSE, UNDERSTAND IT AND AGREE TO BE BOUND BY ITS TERMS AS THE COMPLETE AND EXCLUSIVE STATEMENT OF THE AGREEMENT BETWEEN US, SUPERSEDING ANY PROPOSAL OR PRIOR AGREEMENT, ORAL OR WRITTEN, AND ANY OTHER COMMUNICATIONS BETWEEN US RELATING TO THE SUBJECT MATTER OF THIS LICENSE.

LICENSE

TrayCalendar is a Shareware program and is provided at no charge to the user for evaluation. If you find this program useful and find that you are using **TrayCalendar** after the 30 day trial period, you must pay a registration fee of US \$15 to **EBus** or discontinue your usage of **TrayCalendar**. (see [Registration](#))

The registration fee will license one copy of **TrayCalendar** for use by a single person who may use the software on one or more computers. The registration fee covers this and any future version of **TrayCalendar**, and entitles the user to free technical support and free version upgrades by mail, e-mail, and web page.

Quantity discounts and Site licenses are available.

COPYRIGHT

All title and copyrights in and to the software product and any copies thereof are owned by the author.

RESTRICTIONS

You must maintain all copyright notices on all copies of the software product.

You may not reverse engineer, decompile, or disassemble the software product.

You may not rent or lease the software product.

You may permanently transfer all of your rights under this Agreement.

You must comply with all applicable laws regarding the use of the software product.

DISTRIBUTION

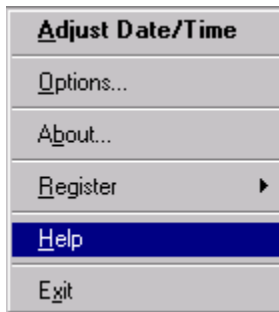
Regardless of your registration status, you're encouraged to distribute the UNREGISTERED version of **TrayCalendar**. The REGISTERED version may NOT be distributed by any means.

You must include all files in the original distribution.

If **TrayCalendar** is to be distributed on a read-only medium such as CD-ROM, then it is strongly recommended that the self-extracting .exe version with Setup routine is used, rather than the .zip file or individual uncompressed files. This version is available on the **EBus** web page at <http://ebus.simplenet.com>

This software cannot be resold or used in any profit-generating activities, including, but not limited to, distributing **TrayCalendar** as part of commercial products, or in support of commercial services, without the author's expressed written permission.

TrayCalendar is Copyright © 1996, 1997 **EBus**, All Rights Reserved



Use the above menu item from the Popup menu to access the help for **TrayCalendar**.

Context-sensitive help is also available

o By pressing the help button in the upper right of any dialog(?) Please explain furthero By clicking with mouse button 2 on anything in a dialog, you will get a popup menu,

What's This? if that item has specific help associated with it. Select **What's this?** From the menu to receive specific help on that item.

Check this box to make the background of the calendar icon clear

Check to show About screen on startup

Select this to show the full date in the tray.

Select this to show the textual day of the week only in the tray.

Select this to show the numerical day of the week as an icon in the tray.

Select this to show both the number and a short version of the textual day of the week in the tray.

Select this for a normal startup (no delay) - Icon will be placed in the system tray immediately.

Select this to delay the startup of **TrayCalendar** to allow other icons to place themselves in the system tray. This will allow **TrayCalendar** to place itself next to the time value located in the system tray.

Select this if you always want the **TrayCalendar** text color to be black, regardless of system settings.

Select this if you always want the **TrayCalendar** text color to match the system settings.

Select this to show the date as MM/DD/YY, for example 12/31/97

Select this to show the date as DD/MM/YY, for example 31/12/97

Check this box if you want **TrayCalendar** to automatically refresh itself every 10 minutes. This will keep the **TrayCalendar** icon(s) next to the time in the system tray.

Press to Save and Exit the screen

Press to Cancel changes and Exit the screen

TrayCalendar animation

EBus animation

No specific help available

Company name

Press to send email to the author of **TrayCalendar**

Company address

Program copyright

Program name

Program type and price

EBus logo

Press to browse the **TrayCalendar** web page

Who **TrayCalendar** is registered to

The registration code for **TrayCalendar**

Who **TrayCalendar** is registered to

The registration code for **TrayCalendar**

Press to open the **Registration** screen

Press to view help on **How to Register**

Enter the name you registered **TrayCalendar** with here

Enter the registration code provided to you by **EBus** here

Enter the name you registered **TrayCalendar** with here


Enter the registration code provided to you by **EBus** here


Everett's Box of Unlimited Software (EBus)
Everett Barnes
2430 Erie Drive
Concord, CA 94519
USA


Web Page: <http://ebus.simplenet.com>
E-Mail: ebus@ebus.simplenet.com



Home of TrayDrive and TrayCalendar

By pressing the help button in the upper right of the dialog()

the cursor will change to a  . You may then click on anything in the dialog to receive help on that specific topic.

By clicking with mouse button 2 on anything in the dialog, you will get a popup menu,  if that item has specific help associated with it. Select **What's this?** From the menu to receive specific help on that item.



No Help Available

No help is available for this area of the window.



No Help Available

No help is available for this message box.

